

EVAAS 101

CONCEPTS FOR MEASURING STUDENT PROGRESS



WRESA Summer Leadership Conference
June 25th, 2013

PRESENTERS

WE ARE HAPPY TO BE WORKING WITH YOU TODAY!



Deanene Deaton

- Educator Support Specialist
- SAS EVAAS



Jenn Persson

- Educator Support Specialist
- SAS EVAAS

<http://thismeeting.wikispaces.com>

- Teacher and Admin Effectiveness Ratings in the First Year that Counts
2:00-4:00

**LIVE Online Training Sessions available daily
and opportunity for
scheduled Coaching Sessions**

ncdpi.sas.com

AGENDA

- **Part 1 EVAAS: What is it? Where is it?**
Progress vs. Achievement
- **Part 2 Let's Pause and Reflect**
How effective are our educational programs overall?
- **Part 3 Digging Deeper**
How can we improve instructional practice?
- **Part 4 Scratching the Surface**
Where do we go from here?

AGENDA

- **Part 1 EVAAS: What is it? Where is it?**
Progress vs. Achievement
- **Part 2 Let's Pause and Reflect**
How effective are our educational programs overall?
- **Part 3 Digging Deeper**
How can we improve instructional practice?
- **Part 4 Scratching the Surface**
Where do we go from here?

WHAT IS EVAAS?

E

- Education

V

- Value

A

- Added

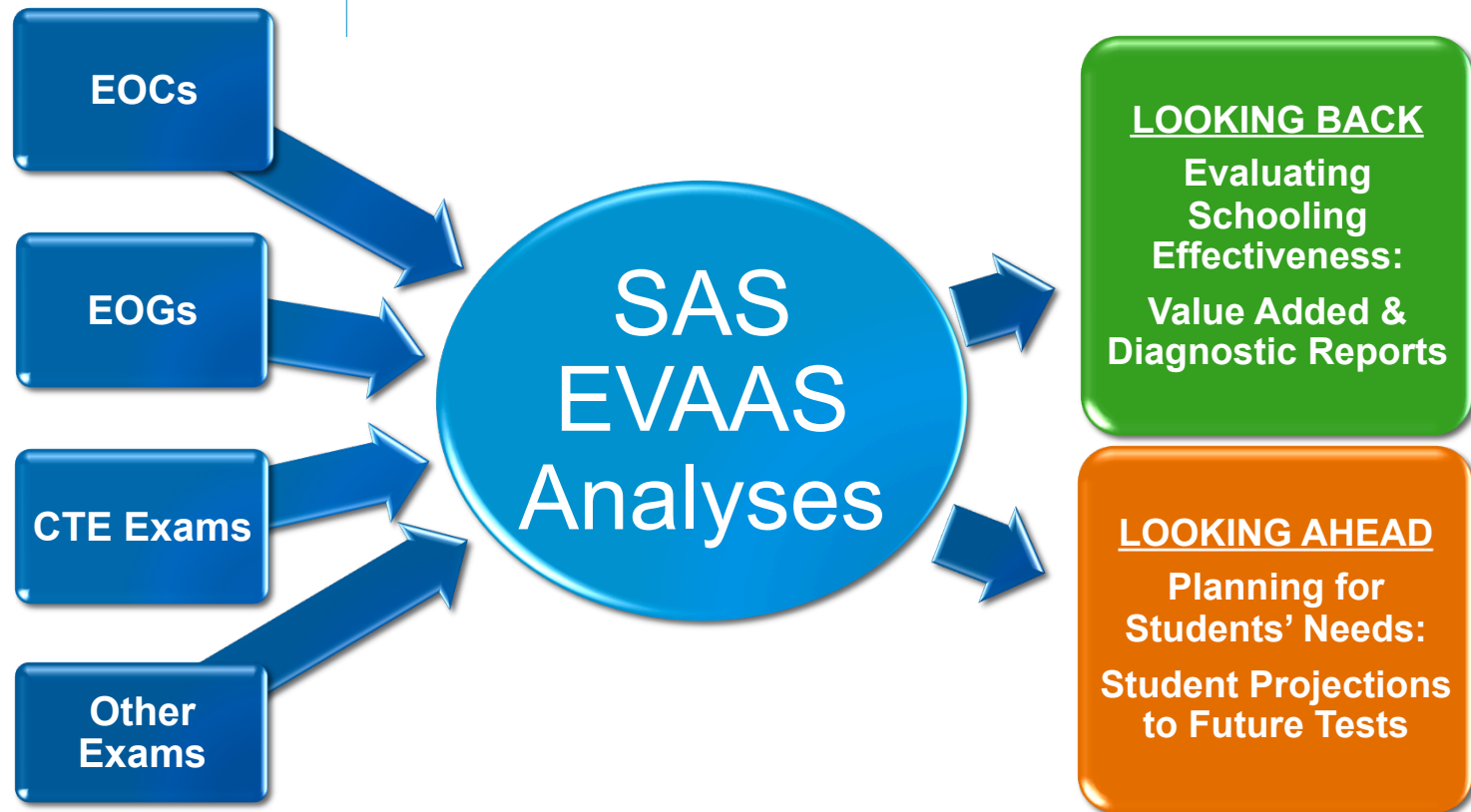
A

- Assessment

S

- System

WHAT IS EVAAS?




WHAT IS EVAAS?



WHERE IS EVAAS?

<https://ncdpi.sas.com>



[Contact Us](#)

NC DPI Login

Username:

Password:


[Sign In](#)

Please note, passwords are case sensitive!

[Forgot username or password?](#)

[Need an account?](#)

Important: You are responsible for maintaining the confidentiality of the information provided in the SAS EVAAS reports. Please close your browser window when you are through with your session to prevent unauthorized access to the reports.



Dr. June Atkinson
State Superintendent of
Public Instruction

Bill Cobey
Chairman
State Board of Education

Training and Development

- [Frequently Asked Questions on EVAAS \(.pdf\)](#)
- [Schedule of Virtual Professional Development \(.pdf\)](#)
- [Virtual Professional Development for Charter Schools \(.pdf\)](#)
- [EVAAS Training for NC IHEs \(.pdf\)](#)
- [NC Educators Talk About SAS EVAAS \(.pdf\)](#)

NCDPI Roster Verification Materials:

- [NEW: Roster Verification Overview \(requires audio\)](#)
- [Quick-Start Guide for NC District Administrators \(.pdf\)](#)
- [Quick-Start Guide for NC School Admins \(.pdf\)](#)
- [Quick-Start Guide for NC Teachers \(.pdf\)](#)
- [Roster Verification FAQ](#)
- [Important Roster Verification Information \(.docx\)](#)
- [Calculating Roster Verification Instructional Responsibility \(.pdf\)](#)


NCDPI Updates

- [EVAAS 2012 Changes \(.pdf\)](#)
- [Enhancements for EVAAS! \(.pdf\)](#)
- [Enhancements Walkthrough - WebEx \(requires audio\)](#)

Customer Success Stories

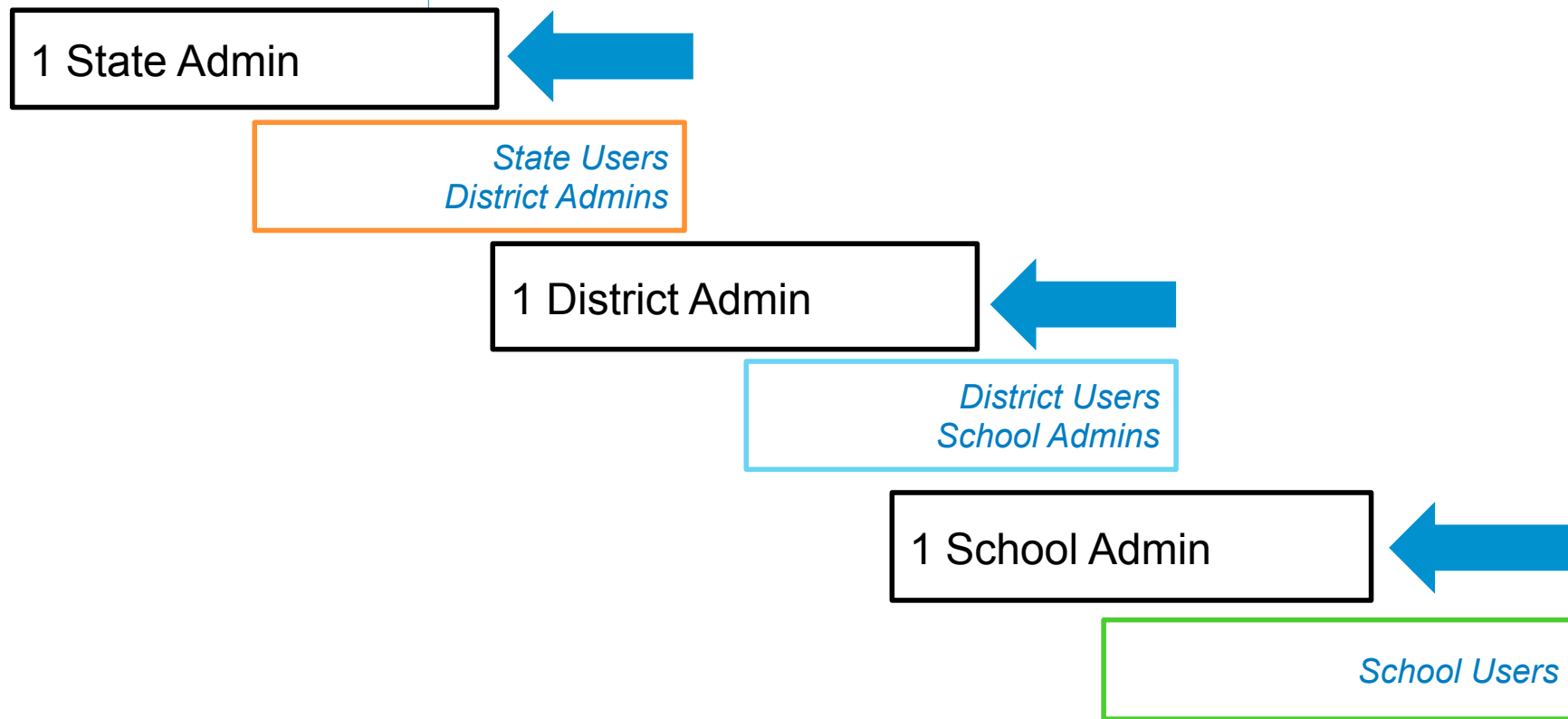
[Share your story with us!](#)

- [Guilford County Schools](#)
- [Wake Forest-Rolesville Middle School](#)
- [Granville County Schools](#)
- [High Point Central High School](#)
- [Person County Schools](#)
- [Beaufort County Schools](#)



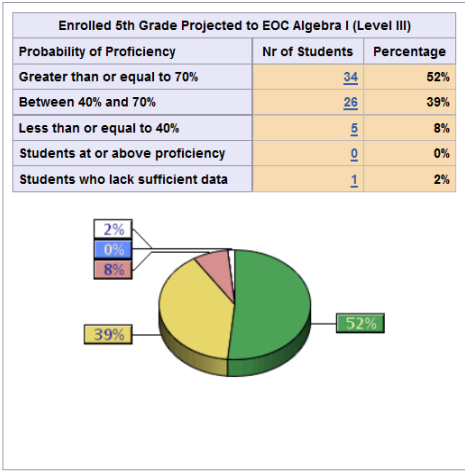
THE POWER TO KNOW.

HOW DO I GET AN EVAAS ACCOUNT?



Report: School Academic Preparedness Report Grade: 5th Grade
School: Bud Day Elementary School Projection: EOC Algebra I (Level III)
District: Burnt Orange Schools
Year: 2012

Select Subgroups



Students whose probability of proficiency is greater than or equal to 70%

Students whose probability of proficiency is between 40% and 70%

NAVIGATION



Home | Search ▼ | Account  Contact Us | Sign Out

Reports

Schools

Grades

Projections

e-Learning

 Print

? Help

Report: School Academic Preparedness Report
School: Bud Day Elementary School
District: Burnt Orange Schools
Year: 2012

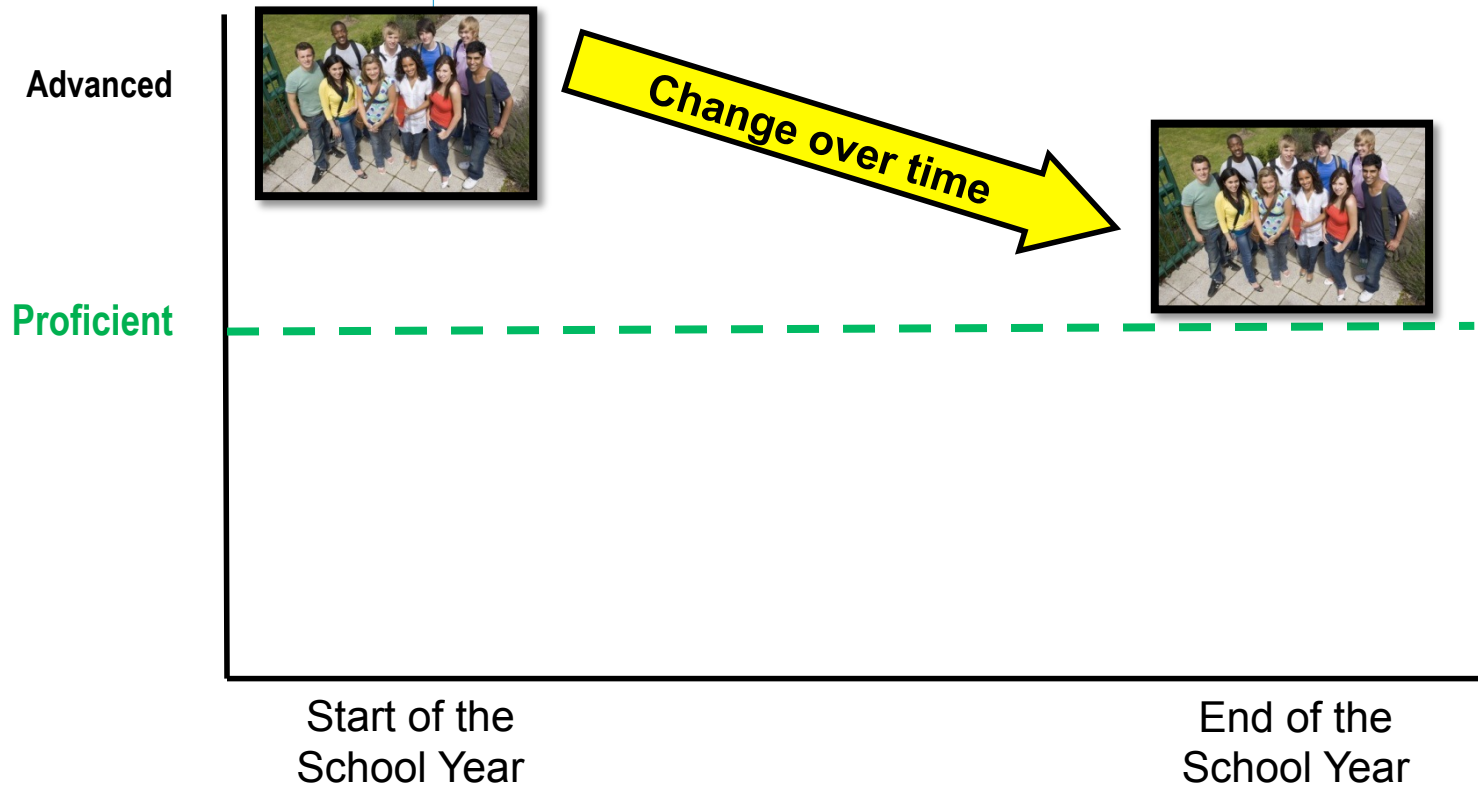
Grade: 5th Grade
Projection: EOC Algebra I (Level III)

PROGRESS VS. ACHIEVEMENT

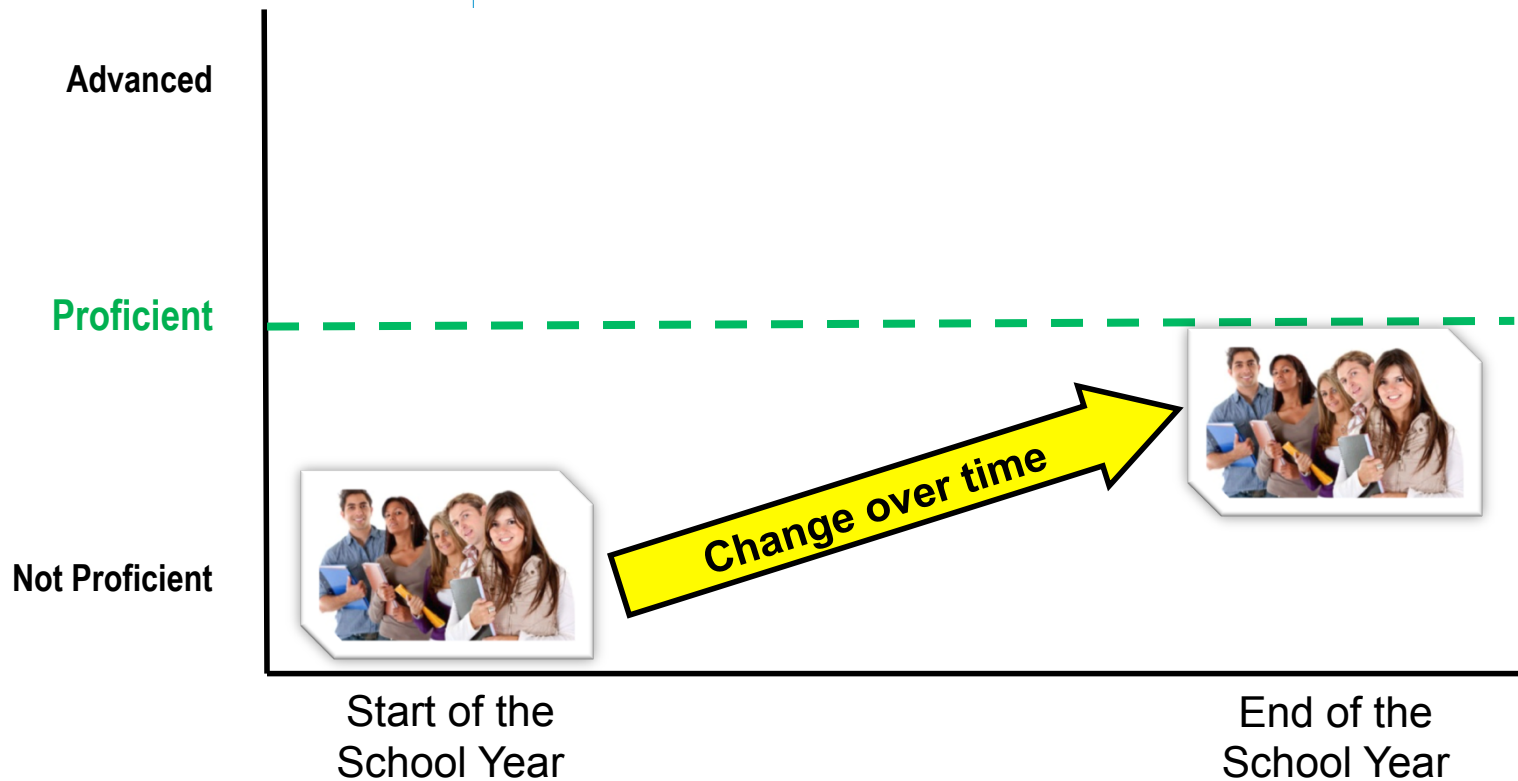
WHEN WE TALK ABOUT PROGRESS, WHAT DOES THAT MEAN?



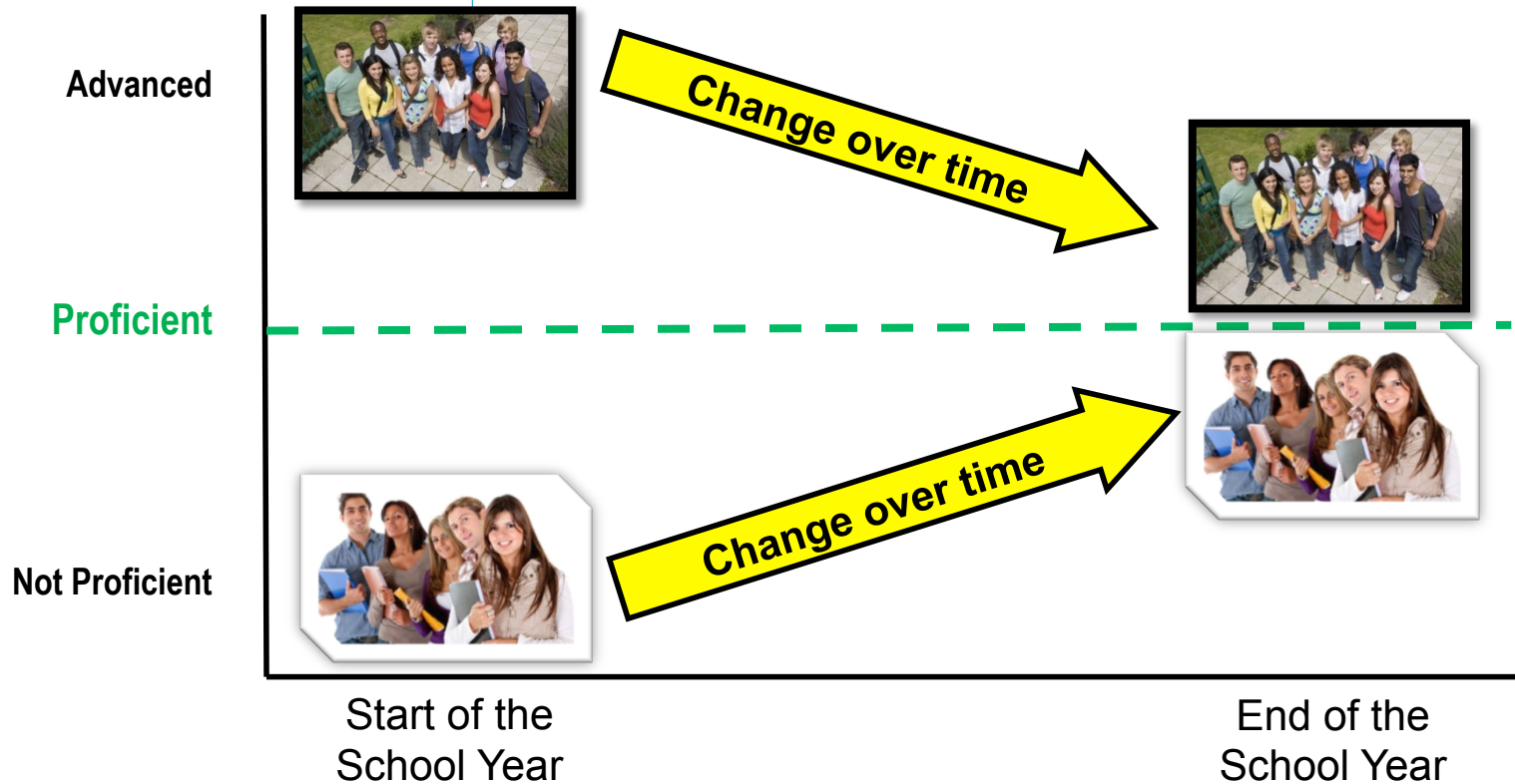
PROGRESS VS. ACHIEVEMENT



PROGRESS VS. ACHIEVEMENT



PROGRESS VS. ACHIEVEMENT

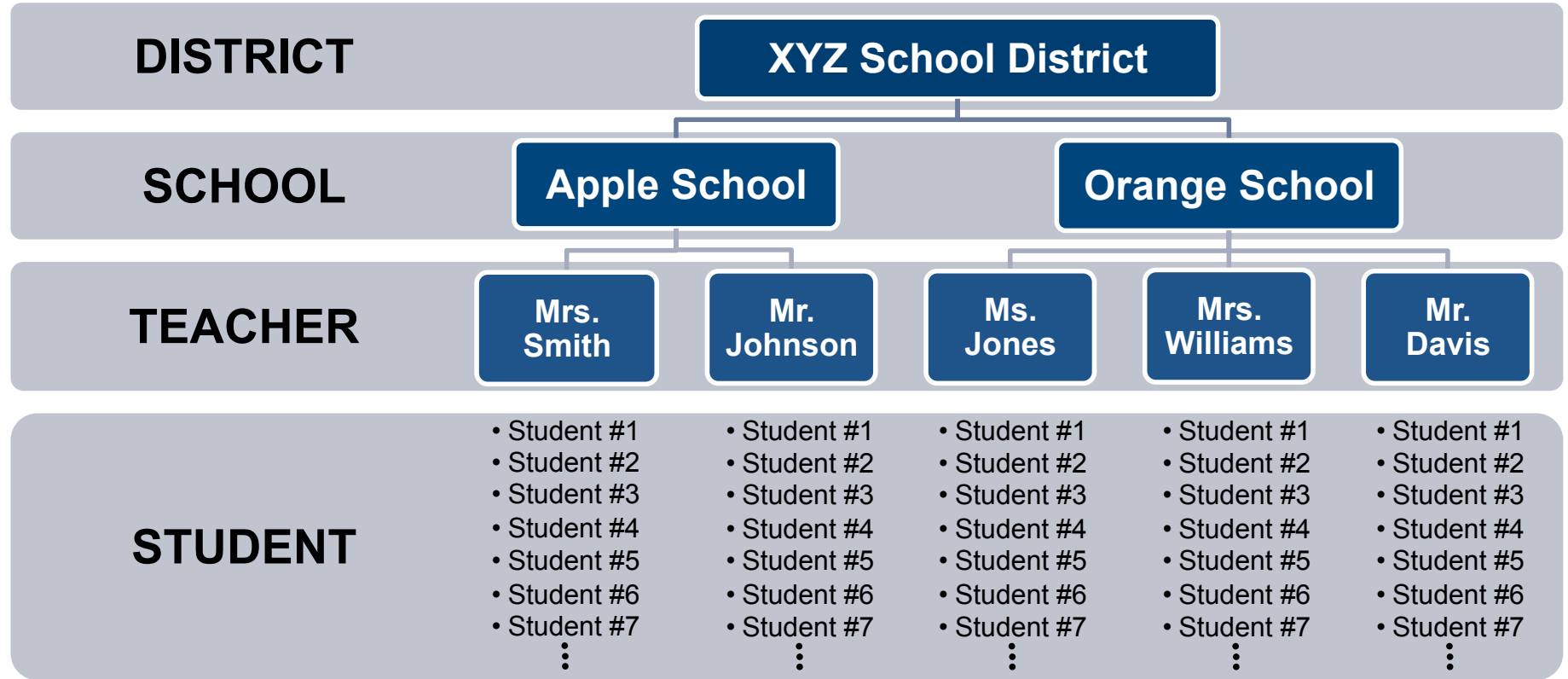


Regardless of their entering achievement level, **students should not lose ground academically.**

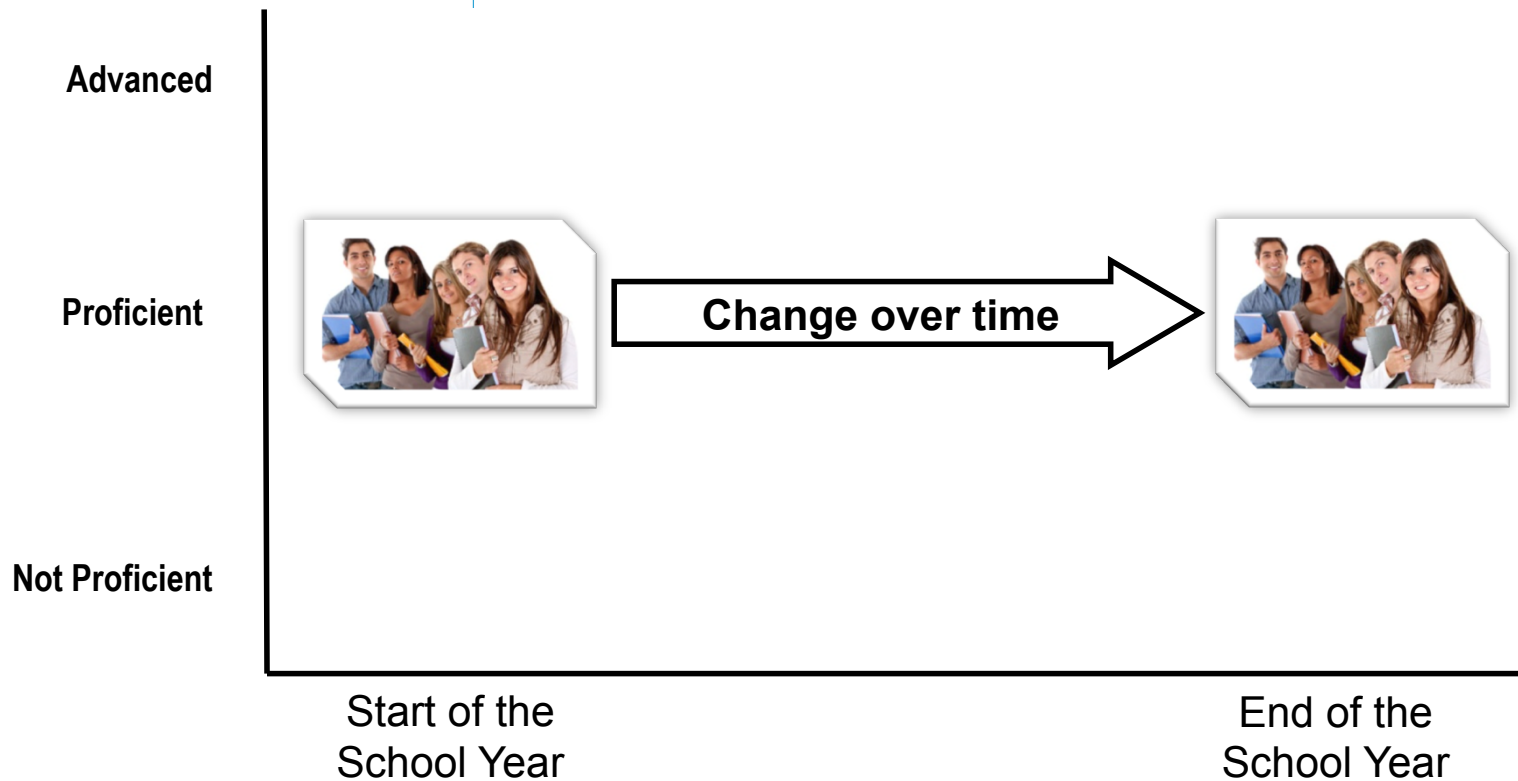
AGENDA

- **Part 1** **EVAAS: What is it? Where is it?**
Progress vs. Achievement
- **Part 2** **Let's Pause and Reflect**
How effective are our educational programs overall?
- **Part 3** **Digging Deeper**
How can we improve instructional practice?
- **Part 4** **Scratching the Surface**
Where do we go from here?

DIFFERENT LEVELS OF INFORMATION AVAILABLE

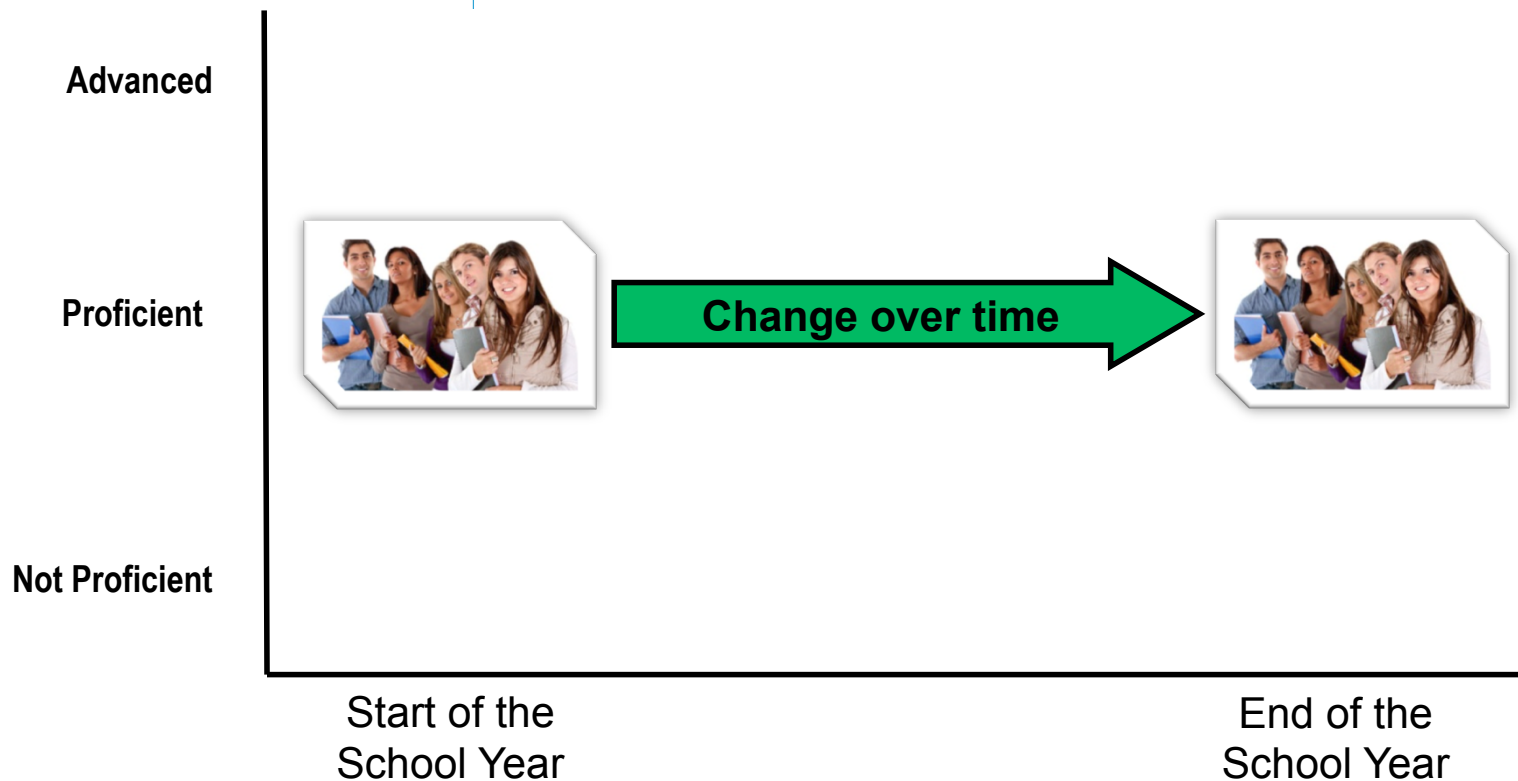


PROGRESS VS. ACHIEVEMENT



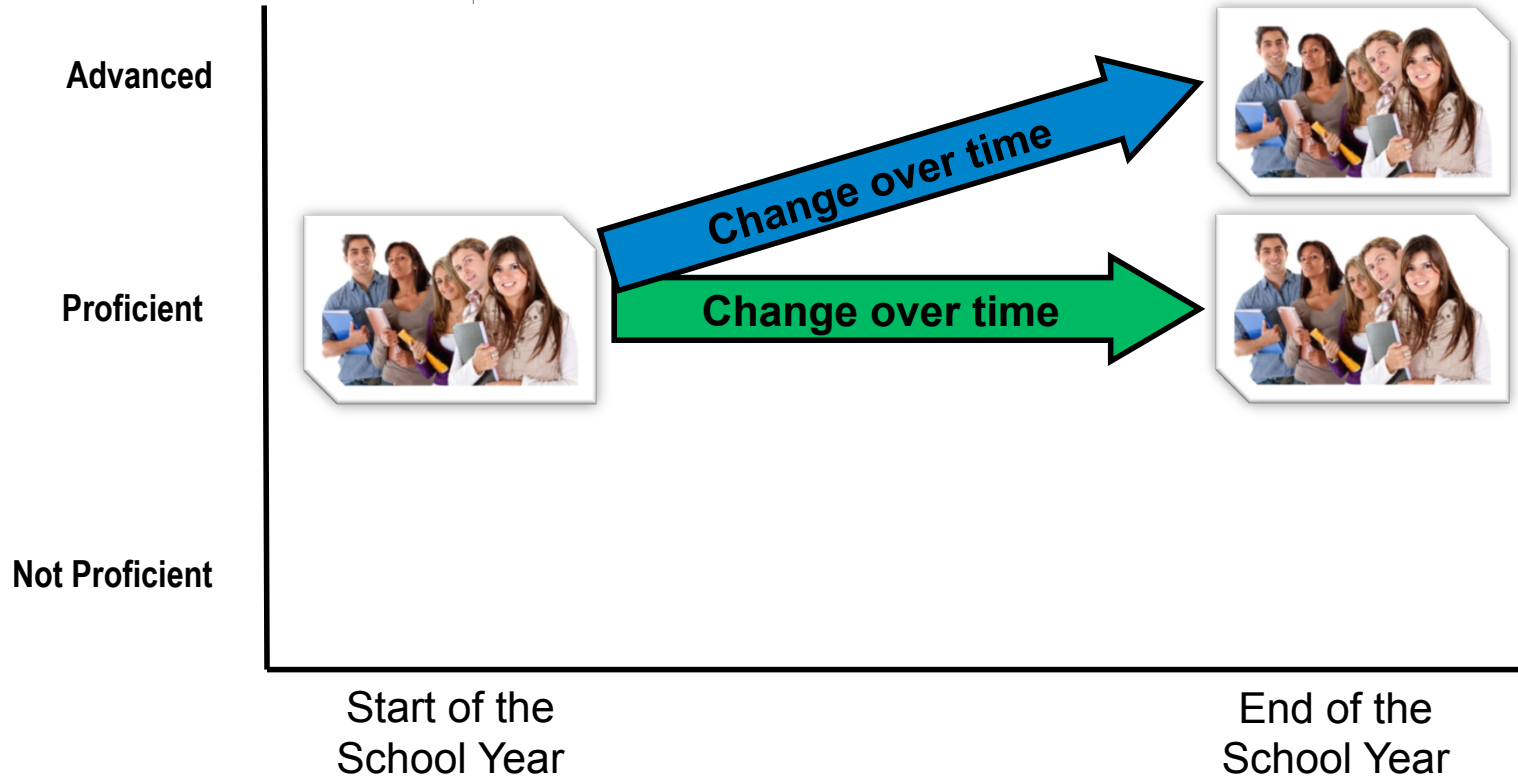
PROGRESS VS. ACHIEVEMENT

Regardless of their entering achievement level,
students should not lose ground academically.



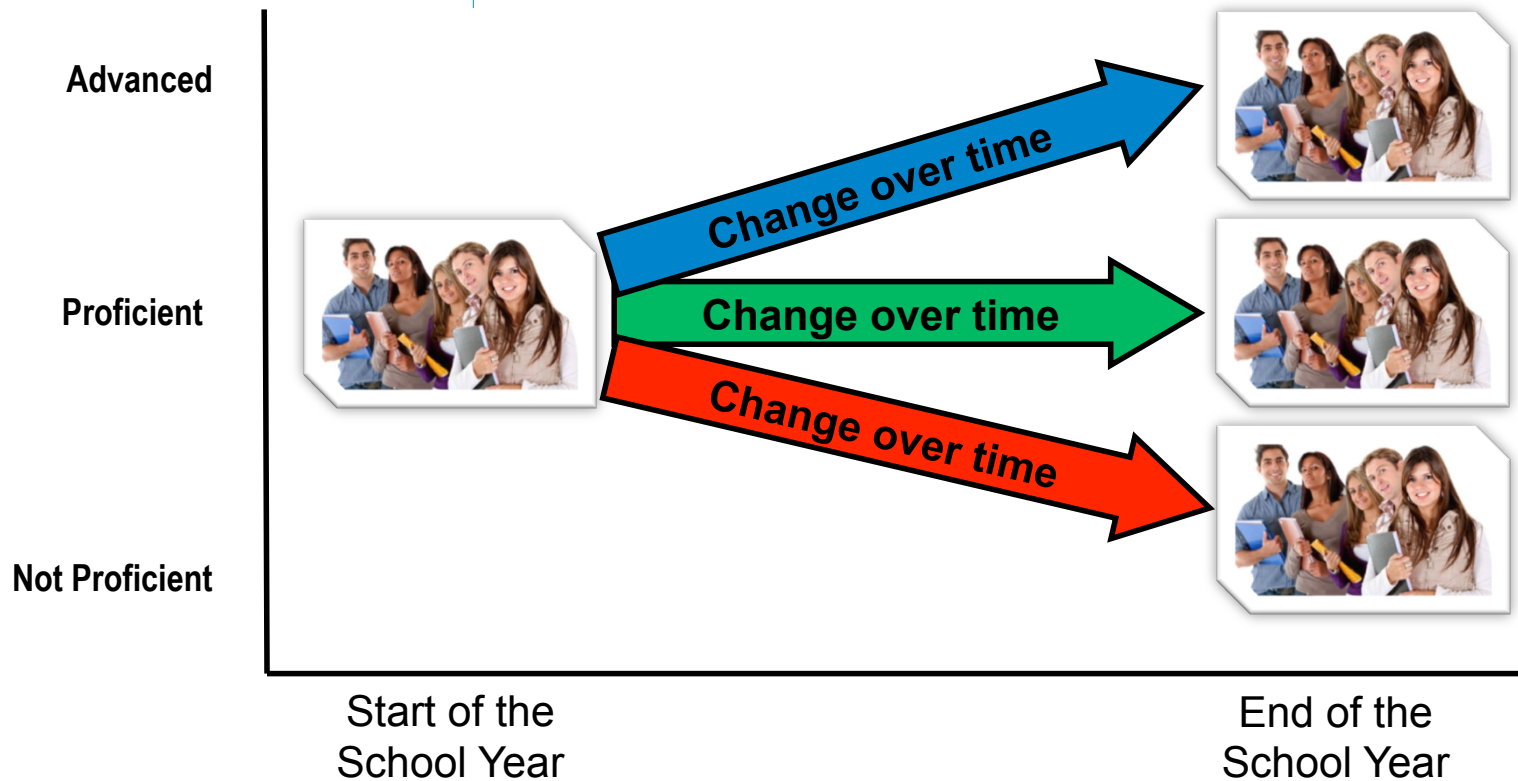
PROGRESS VS. ACHIEVEMENT

Regardless of their entering achievement level,
students should not lose ground academically.



PROGRESS VS. ACHIEVEMENT

Regardless of their entering achievement level, **students should not lose ground academically.**



2 DIFFERENT MODELS:

**Tests
administered
in consecutive
years**

Reading/ELA EOG
Mathematics EOG

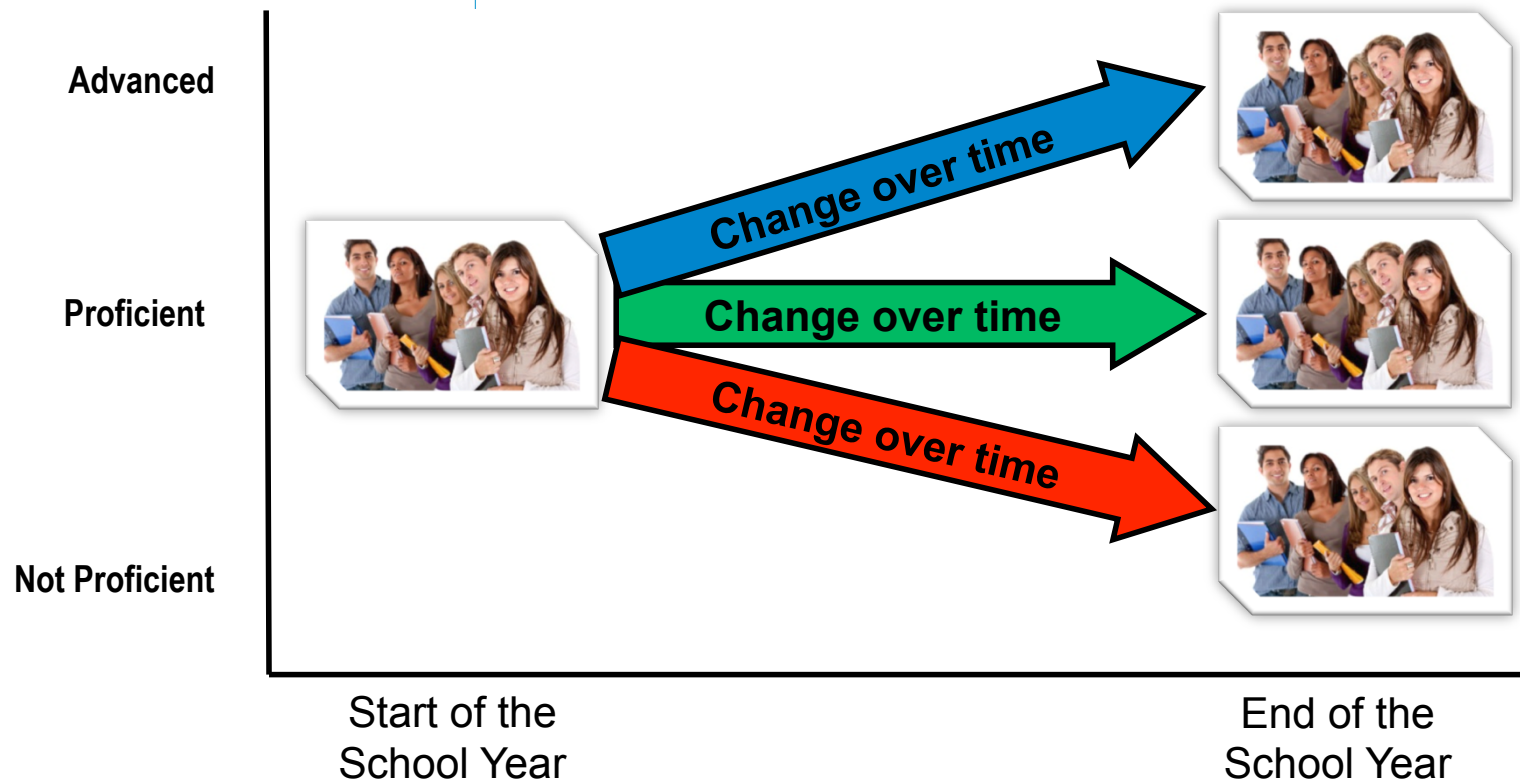
Estimated District Mean NCE Gain							
Grade	<u>3</u>	<u>4</u>	<u>5</u>	<u>6</u>	<u>7</u>	<u>8</u>	Mean NCE Gain over Grades Relative to Growth Standard
Growth Standard		0.0	0.0	0.0	0.0	0.0	
2010 Mean NCE Gain							
Std Error							
2011 Mean NCE Gain							
Std Error							
2012 Mean NCE Gain		<u>4.0</u> B	<u>-3.2</u> R	<u>2.2</u> B	<u>0.5</u> G	<u>1.2</u> B	<u>0.9</u> B
Std Error		0.3	0.3	0.3	0.2	0.3	0.3
3-Yr-Avg NCE Gain							
Std Error							
Estimated District Mean NCE Scores							
Grade	<u>3</u>	<u>4</u>	<u>5</u>	<u>6</u>	<u>7</u>	<u>8</u>	
NCE Base	50.0	50.0	50.0	50.0	50.0	50.0	
2009 Mean							
2010 Mean							
2011 Mean	50.1	53.3	50.9	53.3	52.1	51.8	
2012 Mean	52.9	54.0	50.1	53.1	53.7	53.3	

**Tests NOT
administered
in consecutive
years**

Science EOG
All HS Tests

Subject	Grade	Year	N	Mean Student Score	Mean Score %-ile	Mean Pred Score	Pred Score %-ile	School Effect	Effect Std Err	School vs State Avg
Science	5	2010	77	155.2	50	153.3	45	<u>1.7</u>	0.6	Exceeds Expected Growth
		2011	81	153.3	38	154.7	43	<u>-1.3</u>	0.6	Does Not Meet Expected Growth
		2012	78	155.2	39	155.2	45	<u>-0.1</u>	0.5	Meets Expected Growth
		3-Yr-Avg	236	154.5	43	154.4	43	<u>0.1</u>	0.3	Meets Expected Growth

LET'S PRACTICE



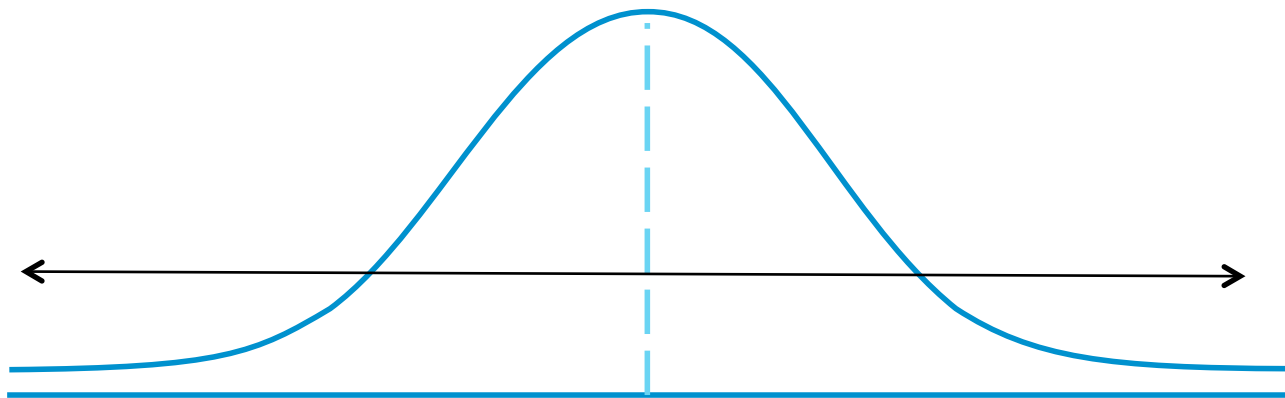
READING/ELA EOG, MATHEMATICS EOG

Estimated District Mean NCE Gain							
Grade	<u>3</u>	<u>4</u>	<u>5</u>	<u>6</u>	<u>7</u>	<u>8</u>	Mean NCE Gain over Grades Relative to Growth Standard
Growth Standard		0.0	0.0	0.0	0.0	0.0	
2010 Mean NCE Gain							
Std Error							
2011 Mean NCE Gain							
Std Error							
2012 Mean NCE Gain		<u>4.0</u> B	<u>-3.2</u> R	<u>2.2</u> B	<u>0.5</u> G	<u>1.2</u> B	<u>0.9</u> B
Std Error		0.3	0.3	0.3	0.2	0.3	0.3
3-Yr-Avg NCE Gain							
Std Error							
Estimated District Mean NCE Scores							
Grade	<u>3</u>	<u>4</u>	<u>5</u>	<u>6</u>	<u>7</u>	<u>8</u>	
NCE Base	50.0	50.0	50.0	50.0	50.0	50.0	
2009 Mean							
2010 Mean							
2011 Mean	50.1	53.3	50.9	53.3	52.1	51.8	
2012 Mean	52.9	54.0	50.1	53.1	53.7	53.3	

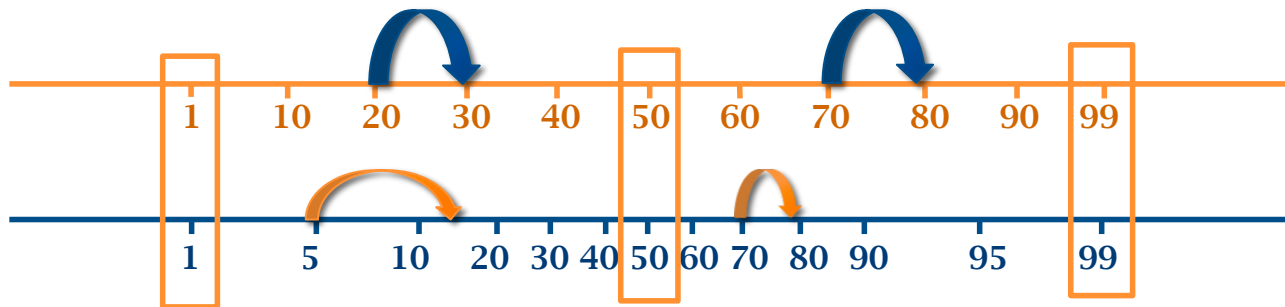
NCE

NORMAL CURVE EQUIVALENT

**Distribution
Of Scores**




**Normal Curve
Equivalents**





**Percentile
Equivalents**

SCIENCE EOG, ALL HS TESTS

Subject	Year	N	Mean Student Score	Mean Score %-ile	Mean Pred Score	Pred Score %-ile	School Effect	Effect Std Err	School vs State Avg
Algebra I	2010	336	150.5	40	149.6	37	0.8	0.3	Exceeds Expected Growth
	2011	366	150.1	40	150.2	40	-0.1	0.3	Meets Expected Growth
	2012	316	148.5	30	149.2	32	-0.6	0.3	Does Not Meet Expected Growth
	3-Yr-Avg	1018	149.7	37	149.7	37	<u>0.0</u>	0.2	Meets Expected Growth

 Exceeds Expected Growth: Progress is significantly above the average school in the state.

 Meets Expected Growth: Progress is not detectably different from the average school in the state.

 Does Not Meet Expected Growth: Progress is significantly below the average school in the state.

SCHOOL/DISTRICT VALUE-ADDED REPORT

**Tests
administered
in consecutive
years**

Reading/ELA EOG
Mathematics EOG

Estimated District Mean NCE Gain							Mean NCE Gain over Grades Relative to Growth Standard
Grade	<u>3</u>	<u>4</u>	<u>5</u>	<u>6</u>	<u>7</u>	<u>8</u>	
Growth Standard		0.0	0.0	0.0	0.0	0.0	
2010 Mean NCE Gain							
Std Error							
2011 Mean NCE Gain							
Std Error							
2012 Mean NCE Gain		<u>4.0</u> B	<u>-3.2</u> R	<u>2.2</u> B	<u>0.5</u> G	<u>1.2</u> B	<u>0.9</u> B
Std Error		0.3	0.3	0.3	0.2	0.3	0.3
3-Yr-Avg NCE Gain							
Std Error							
Estimated District Mean NCE Scores							
Grade	<u>3</u>	<u>4</u>	<u>5</u>	<u>6</u>	<u>7</u>	<u>8</u>	
NCE Base	50.0	50.0	50.0	50.0	50.0	50.0	
2009 Mean							
2010 Mean							
2011 Mean	50.1	53.3	50.9	53.3	52.1	51.8	
2012 Mean	52.9	54.0	50.1	53.1	53.7	53.3	

**Tests NOT
administered
in consecutive
years**

Science EOG
All HS Tests

Subject	Grade	Year	N	Mean Student Score	Mean Score %-ile	Mean Pred Score	Pred Score %-ile	School Effect	Effect Std Err	School vs State Avg
Science	5	2010	77	155.2	50	153.3	45	<u>1.7</u>	0.6	Exceeds Expected Growth
		2011	81	153.3	38	154.7	43	<u>-1.3</u>	0.6	Does Not Meet Expected Growth
		2012	78	155.2	39	155.2	45	<u>-0.1</u>	0.5	Meets Expected Growth
		3-Yr-Avg	236	154.5	43	154.4	43	<u>0.1</u>	0.3	Meets Expected Growth

AGENDA

- **Part 1** **EVAAS: What is it? Where is it?**
Progress vs. Achievement
- **Part 2** **Let's Pause and Reflect**
How effective are our educational programs overall?
- **Part 3** **Digging Deeper**
How can we improve instructional practice?
- **Part 4** **Scratching the Surface**
Where do we go from here?

DIGGING DEEPER

**Tests
administered
in consecutive
years**

Reading/ELA EOG
Mathematics EOG

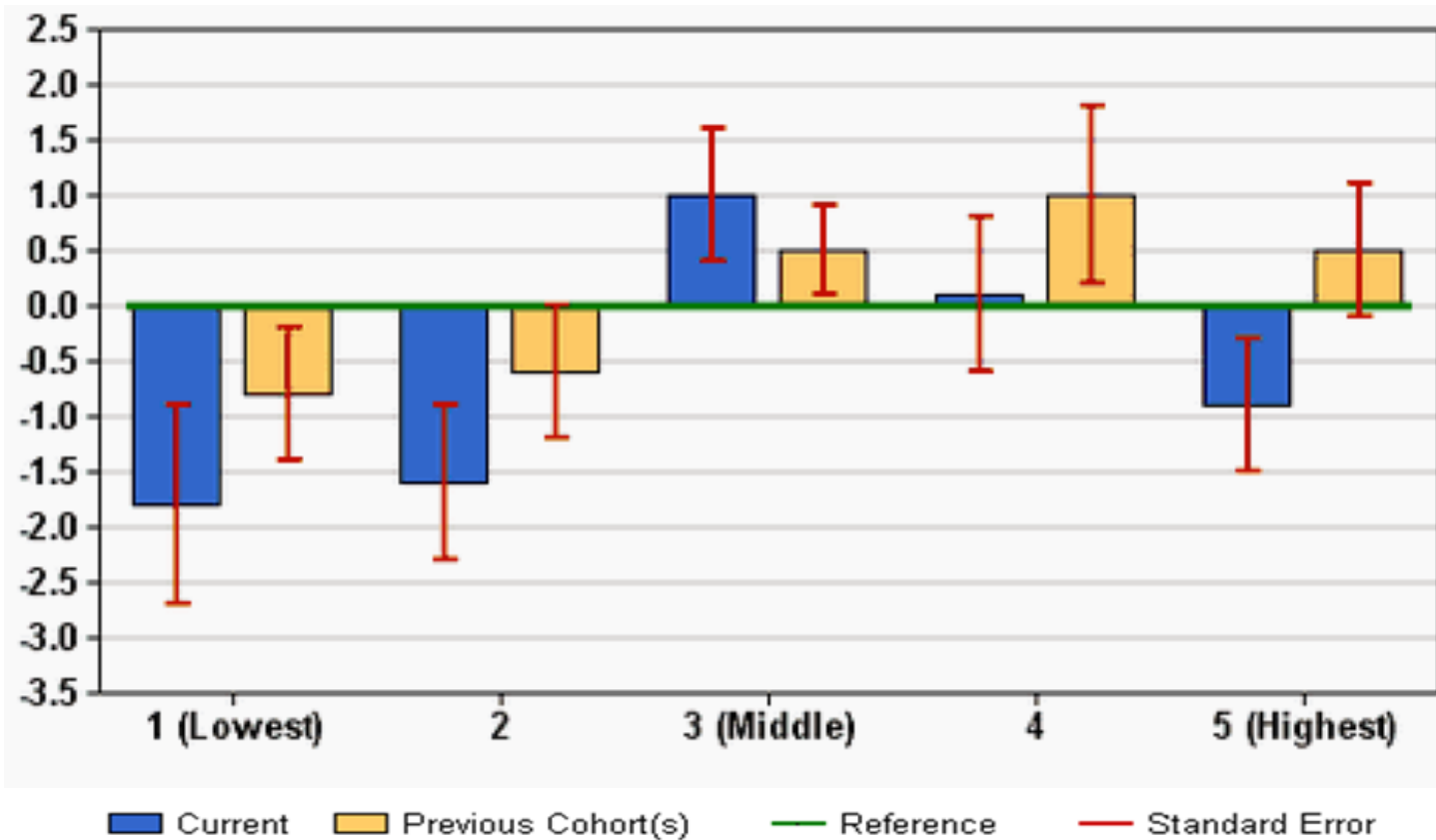
Estimated District Mean NCE Gain							
Grade	<u>3</u>	<u>4</u>	<u>5</u>	<u>6</u>	<u>7</u>	<u>8</u>	Mean NCE Gain over Grades Relative to Growth Standard
2010 Mean NCE		0.0	0.0	0.0	0.0	0.0	
2011 Mean NCE							
Std Error							
2012 Mean NCE Gain		<u>4.0</u> B	<u>-3.2</u> R	<u>2.2</u> B	<u>0.5</u> G	<u>1.2</u> B	<u>0.9</u> B
Std Error		0.3	0.3	0.3	0.2	0.3	0.3
3-Yr-Avg NCE Gain							
Std Error							
Estimated District Mean NCE Scores							
Grade	<u>3</u>	<u>4</u>	<u>5</u>	<u>6</u>	<u>7</u>	<u>8</u>	
NCE Base	50.0	50.0	50.0	50.0	50.0	50.0	
2009 Mean							
2010 Mean							
2011 Mean	50.1	53.3	50.9	53.3	52.1	51.8	
2012 Mean	52.9	54.0	50.1	53.1	53.7	53.3	

**Tests NOT
administered
in consecutive
years**

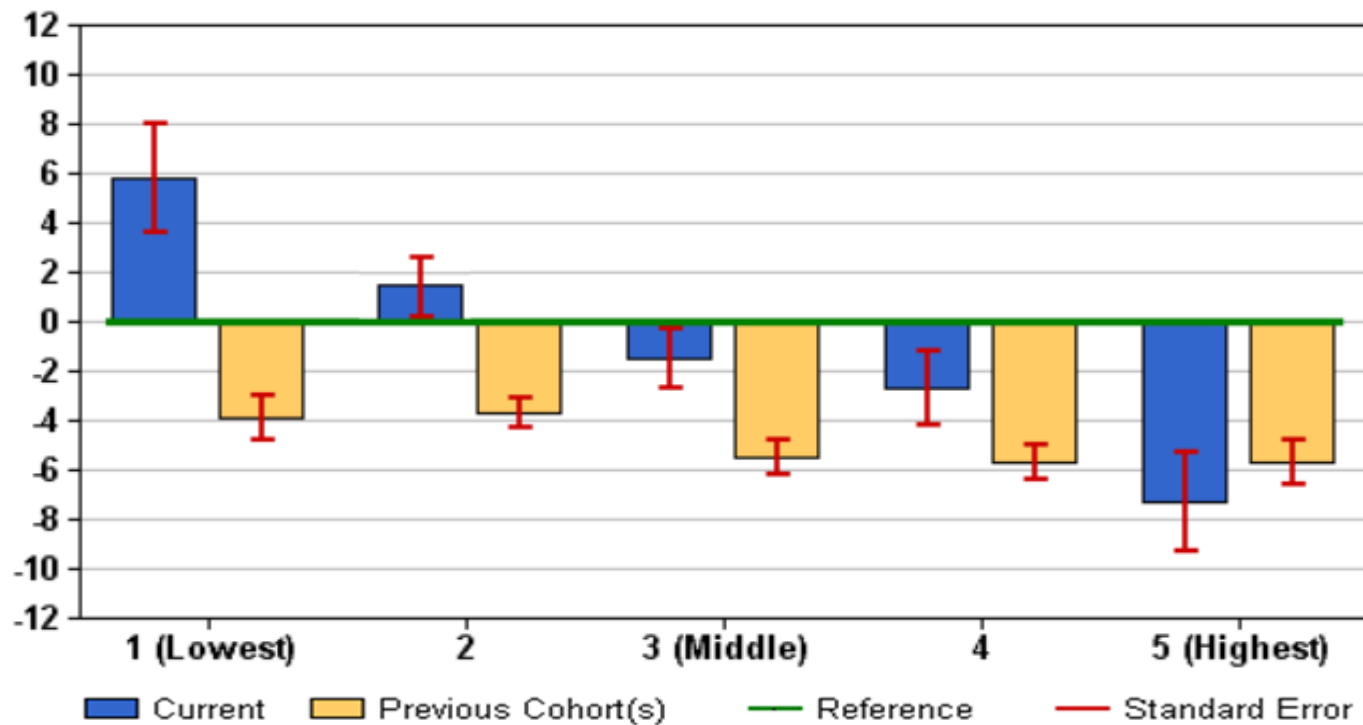
Science EOG
All HS Tests

Subject	Grade	Year	N	Mean Student Score	Mean Score %ile	Mean Pred Score	Pred Score %ile	School Effect	Effect Std Err	School vs State Avg
Science	5	2010	77	155.2		153.3	45	1.7	0.6	Exceeds Expected Growth
		2011	81	153.3				-1.3	0.6	Does Not Meet Expected Growth
		2012	78	155.2	39			-0.1	0.5	Meets Expected Growth
		3-Yr-Avg	236	154.5	43	154.4		<u>0.1</u>	0.3	Meets Expected Growth

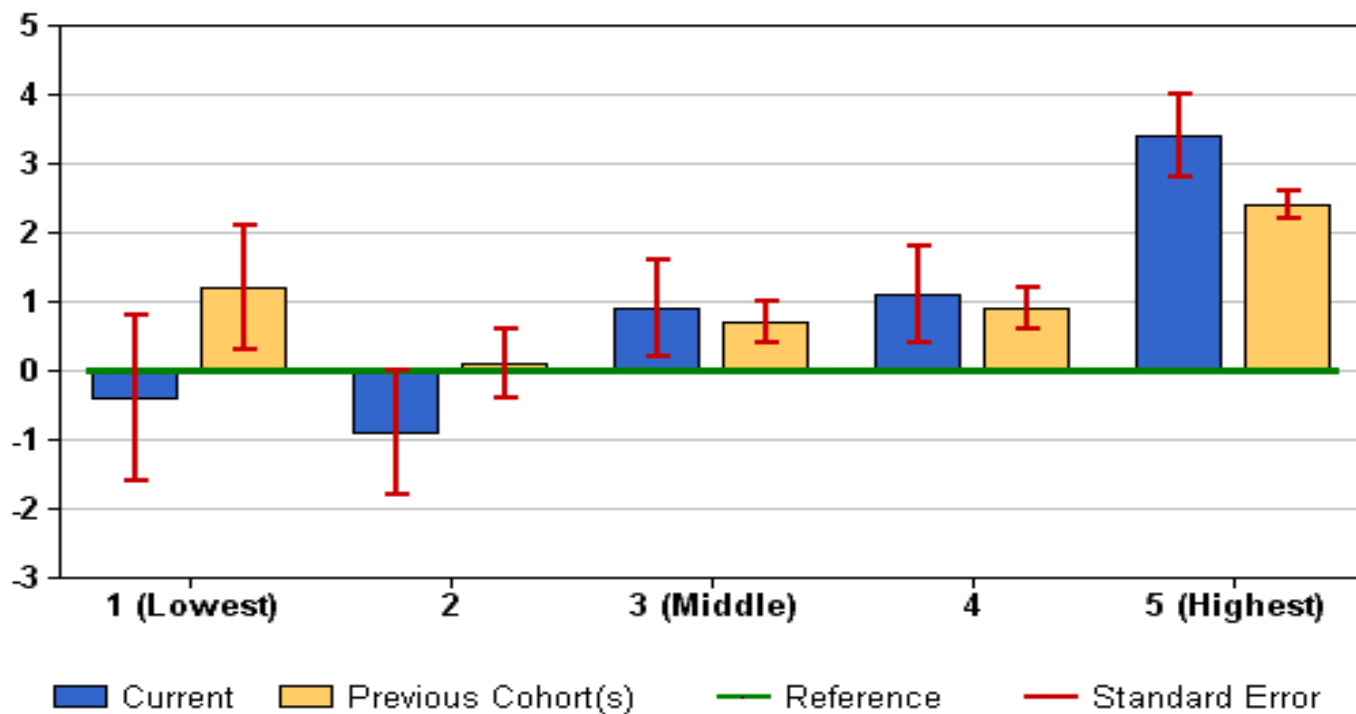
SCHOOL/DISTRICT DIAGNOSTIC REPORT



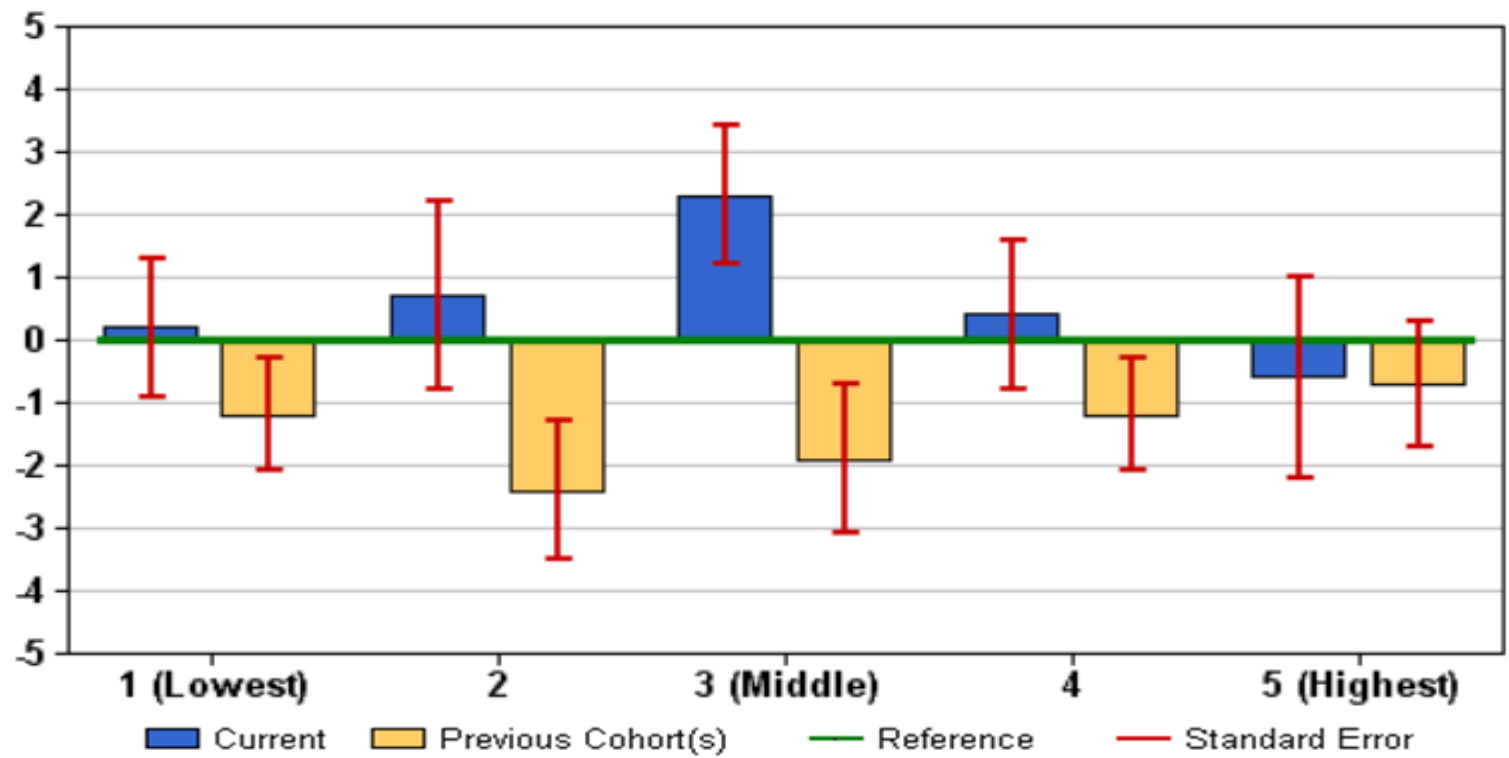
SHED PATTERN



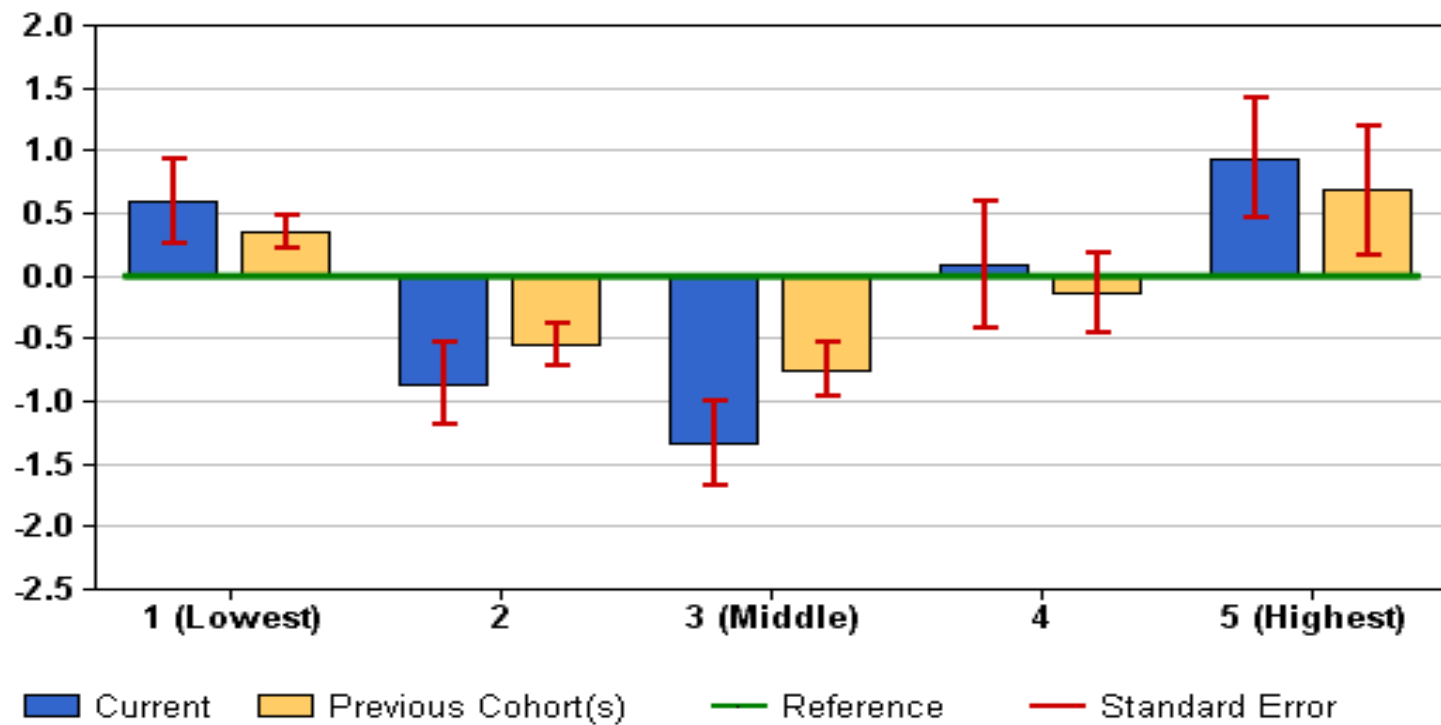
REVERSE SHED PATTERN



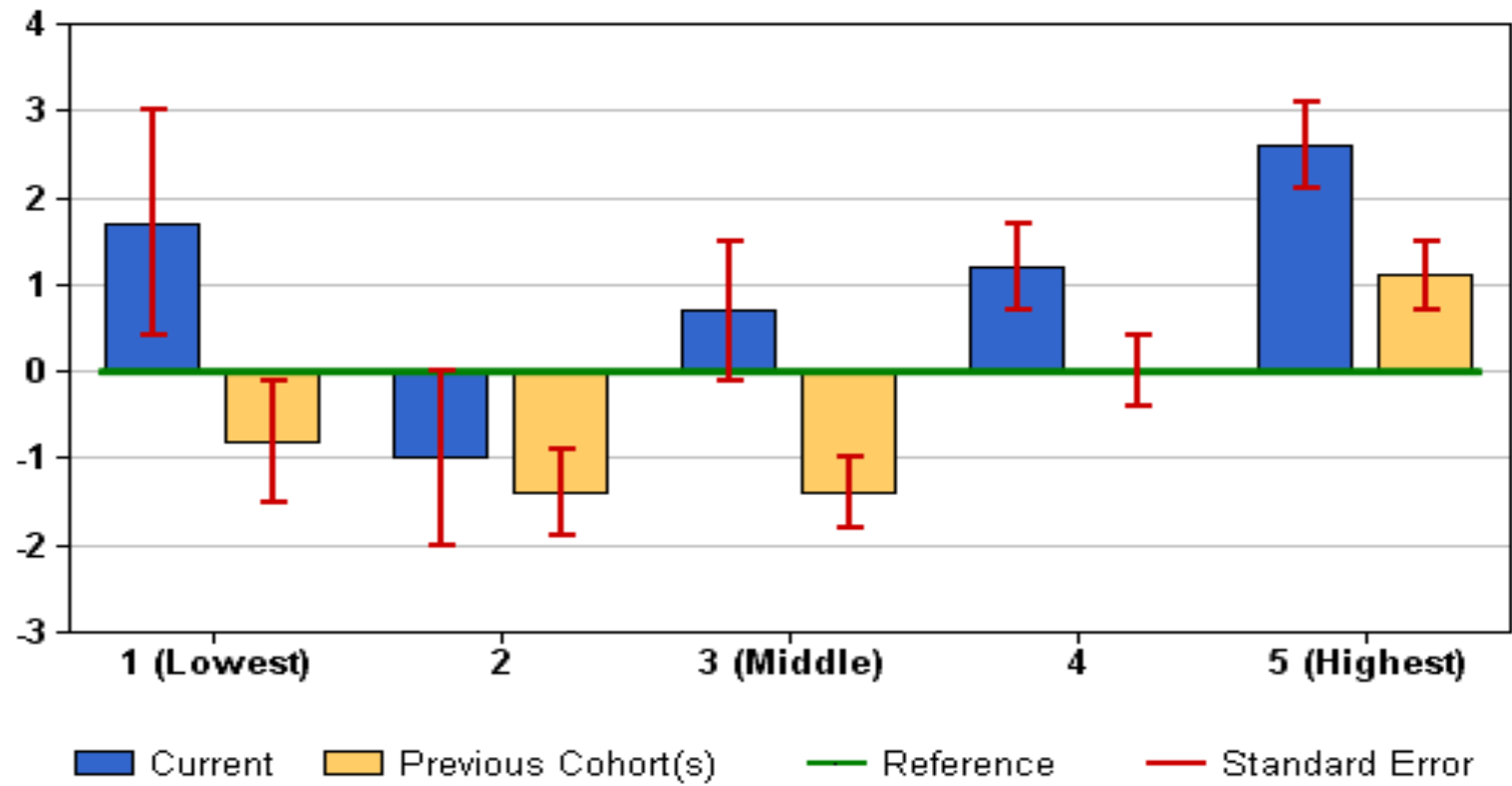
TENT PATTERN



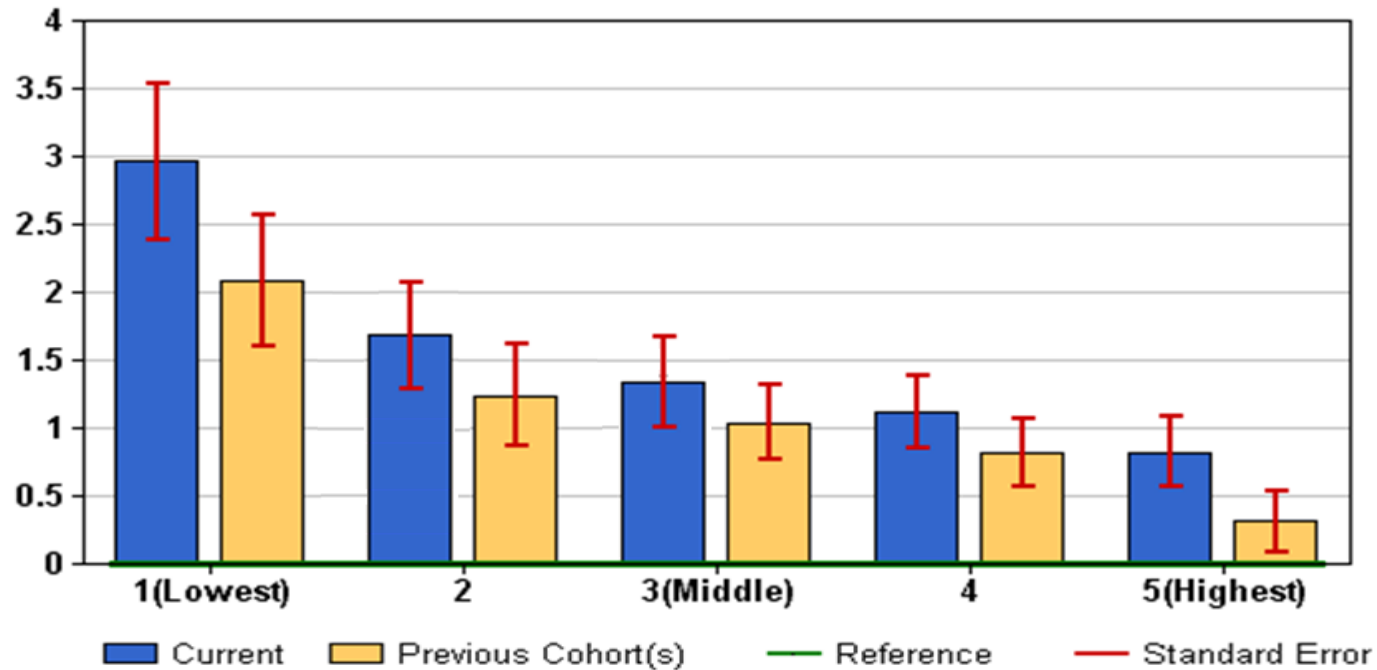
V PATTERN



OPPORTUNITY GAP PATTERN



DESIRABLE PATTERN



AGENDA

- **Part 1 EVAAS: What is it? Where is it?**
Progress vs. Achievement
- **Part 2 Let's Pause and Reflect**
How effective are our educational programs overall?
- **Part 3 Digging Deeper**
How can we improve instructional practice?
- **Part 4 Scratching the Surface**
Where do we go from here?

Today

- Come to the last EVAAS session (2:00-4:00 in this room)

After Today

- Attend a live online webinar with one of us to learn more about EVAAS
- Contact DPI for onsite training options

THANK YOU FOR YOUR TIME!



**THE
POWER
TO KNOW®**